

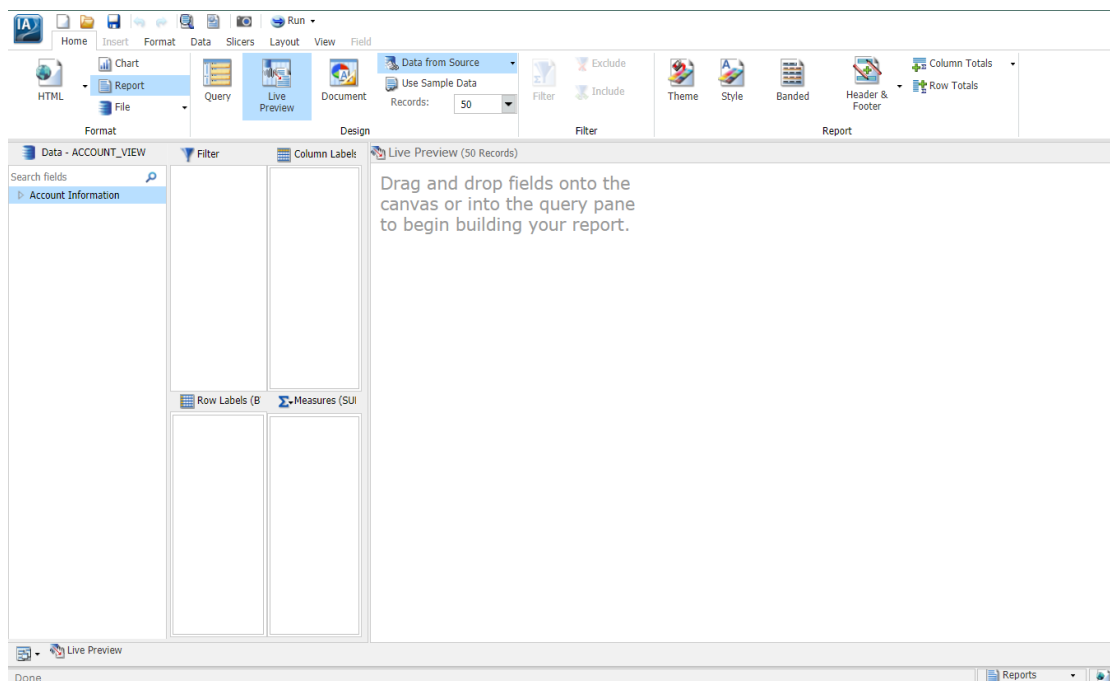
Getting Started with WebFOCUS Version 8.2.06

The purpose of this document is to give you an overview of a few of the key features and functions that have changed in WebFOCUS version 8.2.06. In order to ease into the transition to the new version of WebFOCUS, ITS thought it best to deploy what is called the “Legacy Home Page” view. The “Legacy Home Page” looks very much like our current version of WebFOCUS. It was thought that this would help everyone make the transition to the new version quicker, smoother, as well as much easier. This is important to know because when obtaining vendor support or vendor supplied training, what you see can be substantially different that what we have deployed at UConn. We plan to move to the new version 8.2.06 “Designer” user interface but this will occur after we have successfully migrated everyone to the new version at some future date.

Most of the differences encountered will be found in the InfoAssist tool used by report writers and developers. These are the most important changes you should know before using the new version. Additional information and resources will be available on DataAndReporting.its.uconn.edu

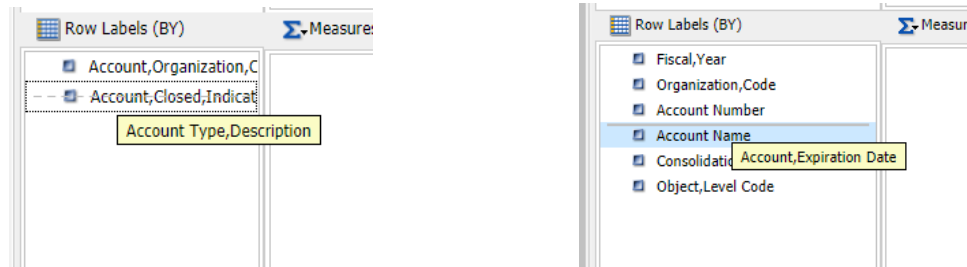
InfoAssist Home Screen

- When you open InfoAssist and are presented with the Home Screen, you will find that the Data Pane has been modified to fill the entire column on the far left of the screen. In place of the “+” symbol, the expand arrow is used. The name of the data source is included at the top of the pane.



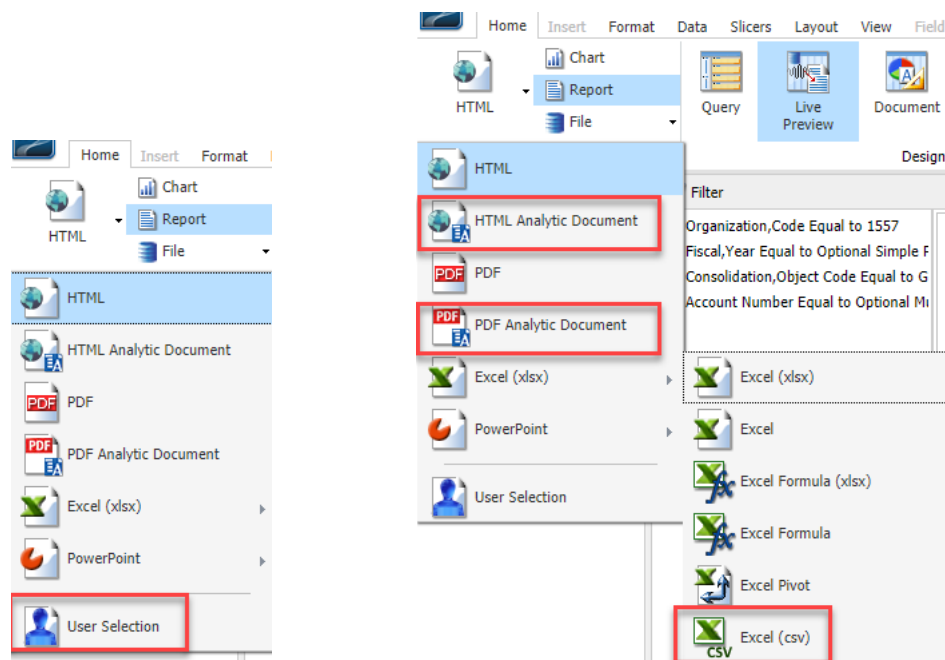
Getting Started with WebFOCUS Version 8.2.06

- **WARNING:** In version 8.2.06, as you drag a field from the Data Pane to the Row Labels, Measures, or Query Pane; a dotted line replaces the field you are dropping onto and a solid line adds the field in that location.



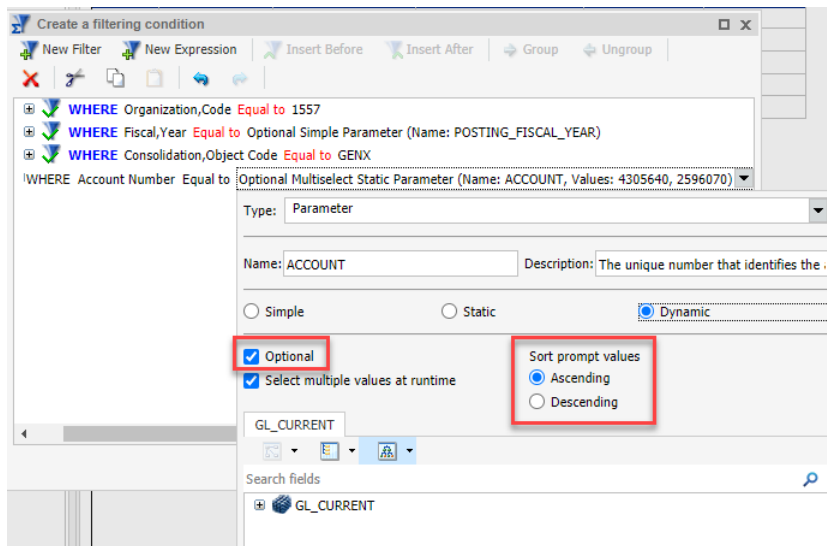
Home tab / Format

- Moved **User Selection** under the Format menu, on the Home tab. When this function is toggled on, the user can select the output format from a drop-down menu at runtime.
- Added the ability to select **Excel (csv)** and **PDF Analytic Document** as output format in the Home tab.
- Active Report is now **HTML Analytical Document** and Active PDF is now **PDF Analytical Document**
- Removed Active Flash.
- **Output Types** menu removed from the **Format** tab. It's all under **Home / Format**




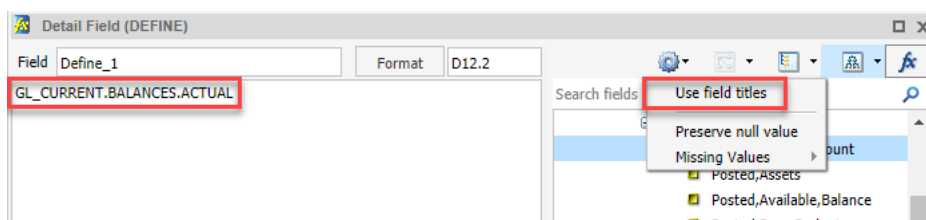
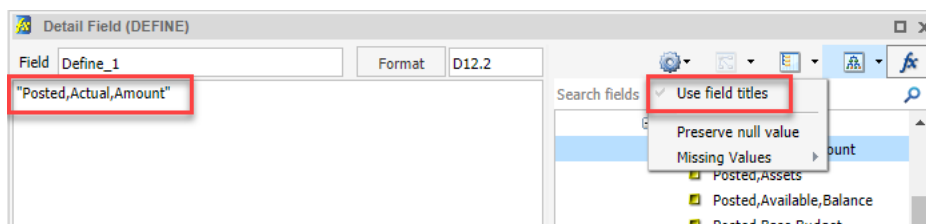
Data / Filter

- There are some new additions in the dialog box when creating a parameter type filter.
 - There is a box to check if this parameter is *Optional*.
 - When creating a dynamic parameter, you can now *Sort Prompt Values* in ascending or descending order.



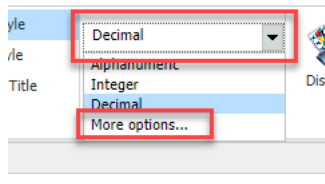
Data / Detail (Define) or Summary (Compute)

- When creating a Defined or Computed field, the default in 8.1 is to display the Alias of the field in the formula box. In 8.2, the default is to display the field title. This default can be set using the new settings menu  in the Detail Field (DEFINE) or Summary Field (COMPUTE) dialog box.



Field / Format

- The field format drop-down menu is now available in 8.2 and you can change the format of a selected field by selecting the type from the short list or use *More Options* for the full dialogue box.



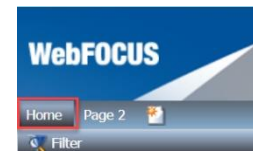
| Object | Posted |
|------------|--------------|
| Value Code | Expense |
| ES | -11,108.18 |
| HX | 5,356,576.41 |
| HX | 158,738.42 |

Field / Links

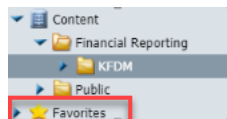
- Hyperlinks* in 8.1 are now *Drill Down* in 8.2. You can use *Drill Down* to create links on a field to external procedures or websites. The function of this procedure is the same as it was in the previous version.

WebFOCUS Home Page

Home tab – The default portal is no longer accessible on the Home tab of the WebFOCUS home page. Some of you have used it as a place to access frequently used reports.



We recommend that you now utilize the *Favorites* function. This easily accessible folder is at the bottom of the left menu on the WebFOCUS Home Page.



To add any report to this folder, right click on the report name and select *Add to Favorites*.

